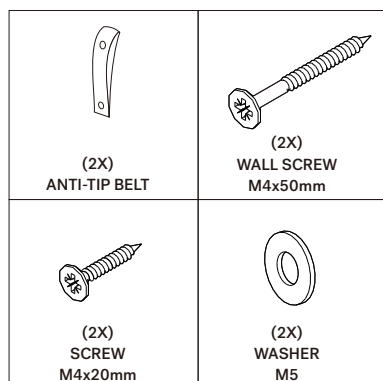


35176 BLOCK RACK

ASSEMBLY INSTRUCTIONS FOR ANTI-TIPPING INSTALLATION

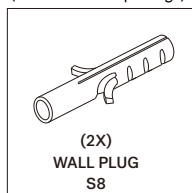


HARDWARE ENCLOSED



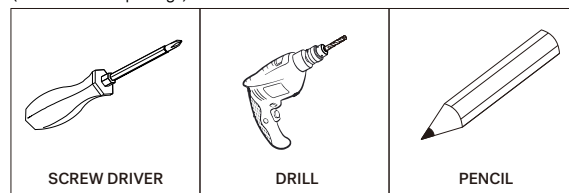
HARDWARE REQUIRED

(Not included in package)



TOOLS REQUIRED

(Not included in package)



- AS WALL MATERIALS VARY, WALL PLUG FOR FIXING TO WALL ARE NOT INCLUDED.
- FOR ADVICE ON SUITABLE SCREW SYSTEMS, CONTACT YOUR LOCAL SPECIALISED DEALER.
- SEEK THE PROFESSIONAL ADVICE IF YOU ARE NOT FAMILIAR WITH THIS TYPE OF INSTALLATION OR HAVE ANY SAFETY DOUBTS UNDERTAKING THE TASK.



! WARNING

Serious or fatal injury can occur if this product tips over.

To reduce the risk:

Always install the anti-tip system provided with this product.

Place heavier items in lower drawers or shelves.

Avoid hanging or placing objects on or above the unit.

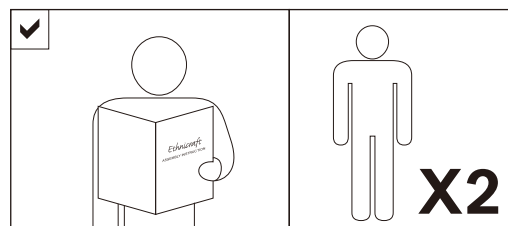
Keep children from climbing, standing, or hanging on drawers, doors, or shelves.

If the item has drawers, open only one at a time.

Do not lean or push against this product.

NOTE: Tip-over restraints can significantly reduce, but not completely remove, the risk of tipping.

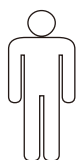
NOTICE



SYMBOLS



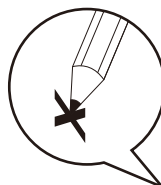
DIRECTION



NUMBER OF PERSONS NEEDED



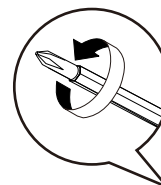
USE HAND



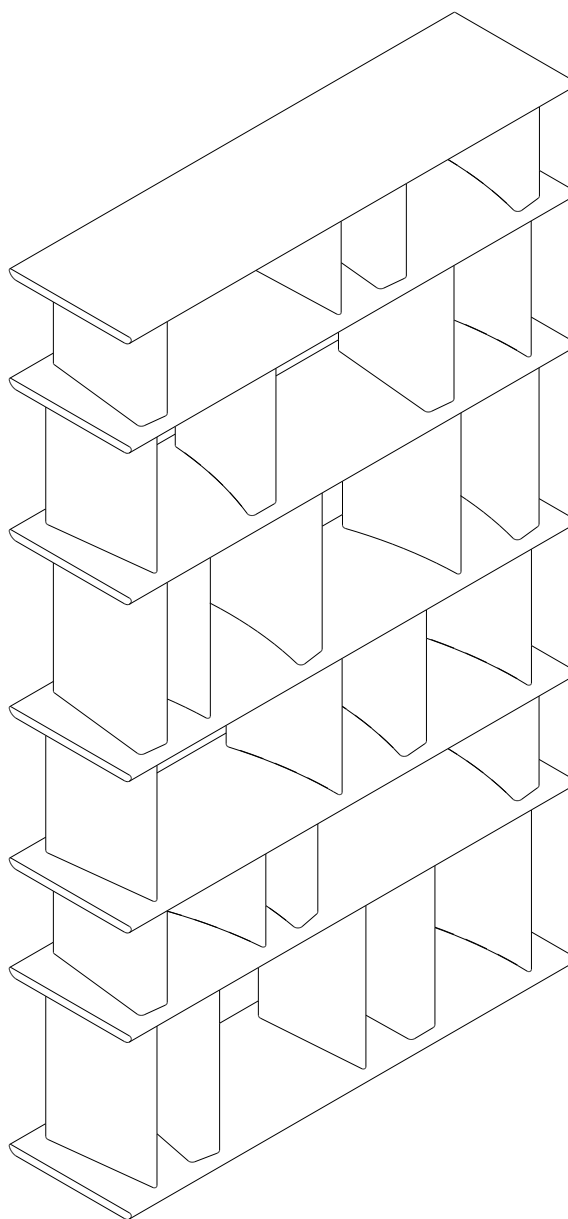
USE PENCIL



USE DRILL



USE SCREWDRIVER TO TIGHTEN

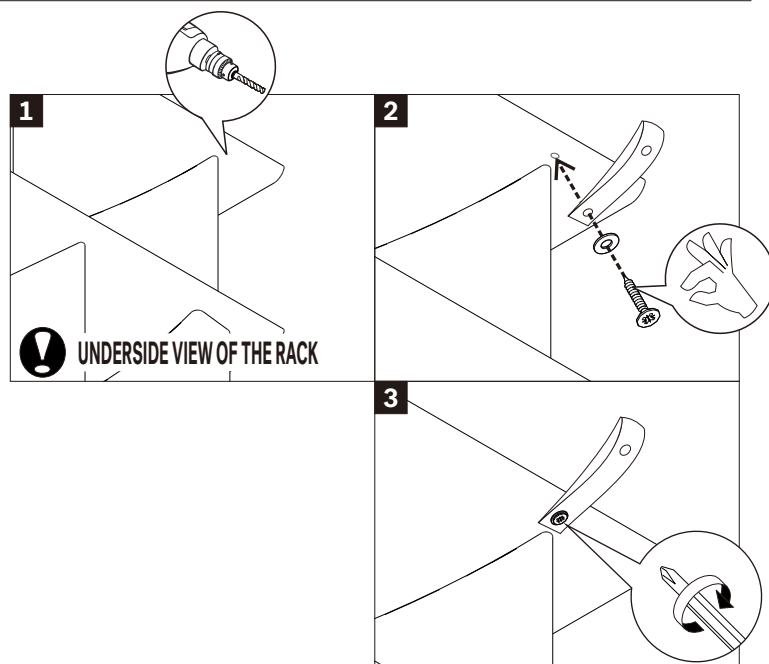
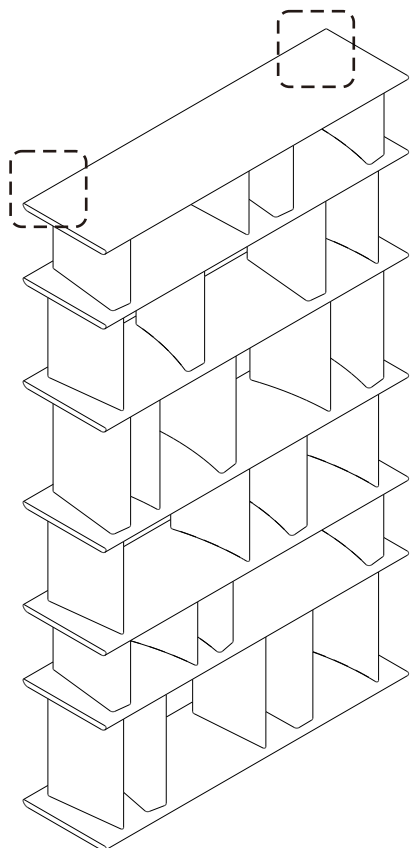


35176 BLOCK RACK

ASSEMBLY INSTRUCTIONS FOR ANTI-TIPPING INSTALLATION

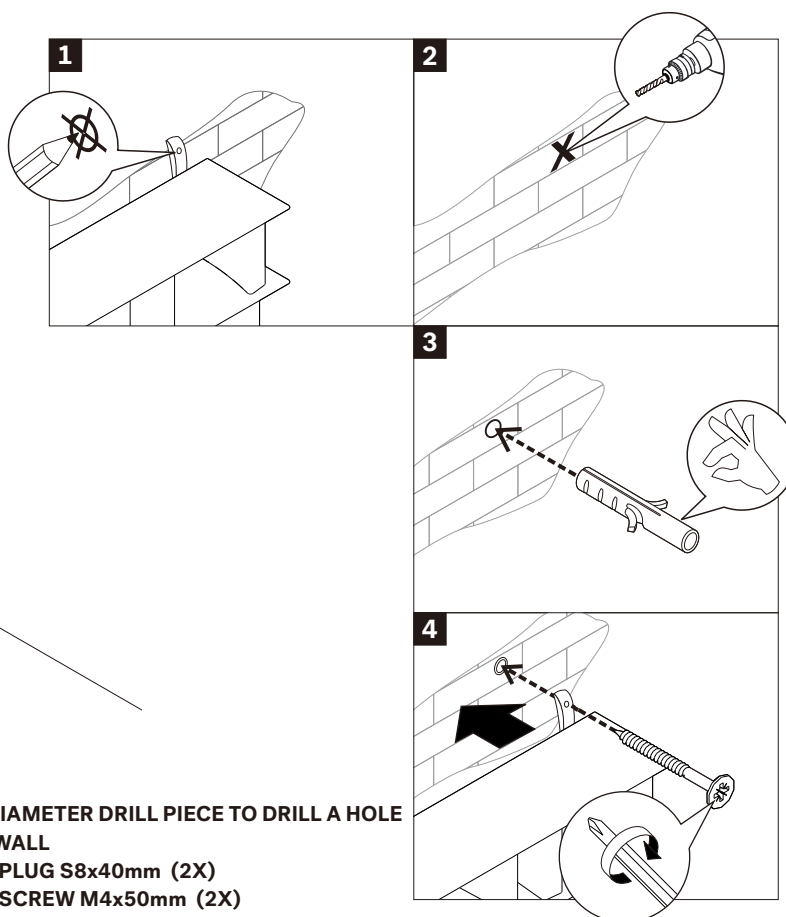
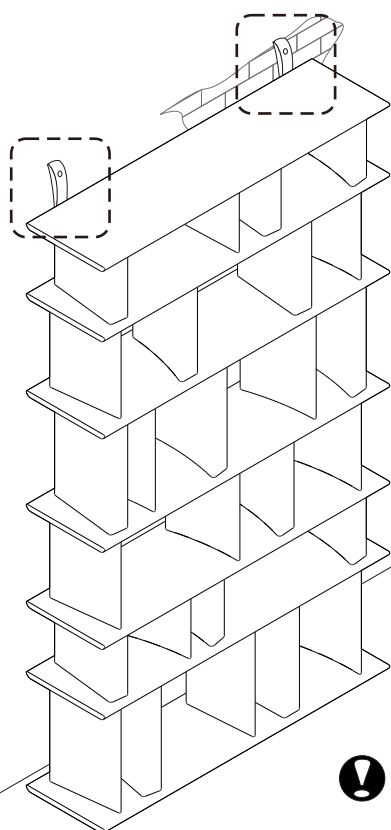


A ATTACHING ANTI-TIP BELT TO THE RACK



- ! - DRILL A HOLE IN THE BACK OF THE RACK
- USE SCREW M4x20mm (2X)
- USE WASHER M5 (2X)
- USE ANTI-TIP BELTS (2X)
- TIGHTEN FULLY

B SECURING TO THE WALL



- ! - USE 1/4" DIAMETER DRILL PIECE TO DRILL A HOLE INTO THE WALL
- USE WALL PLUG S8x40mm (2X)
- USE WALL SCREW M4x50mm (2X)
- TIGHTEN FULLY