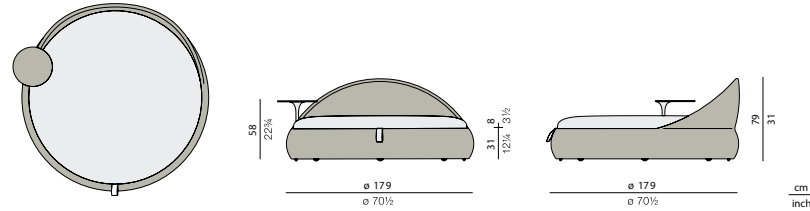


# DALA

## Loveseat

Design by **Stephen Burks** | Ref. **AJH** | Weight **30 kg/66 lbs** | Volume **2,51 m³/35 cu ft** | COM (Customer Own Material): **7,32 m/8.00 yd** (plain fabric only)

### Measurements



**Collection:** DALA takes inspiration from the artisanship and improvised seating arrangements of the developing world. Surface and structure merge in this versatile collection by Stephen Burks, each piece starting as a powder-coated frame of aluminum mesh through which DEDON's master weavers thread colorful strands of our revolutionary new ecological fiber.

**Loveseat:** This spacious daybed has wheels underneath for smooth rotation, pull-out casters for easy mobility and a swiveling table featuring a premium teak tabletop.

**Frame:** Aluminum

**Finishing:** Frame is electrostatic powder-coated. Fiber is High-Density Polyethylene (HDPE). The swiveling table of the DALA loveseat consists of a powder-coated aluminum post and a tabletop of premium teak.

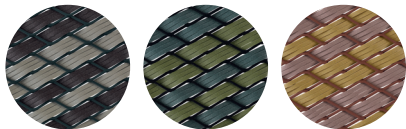
**Characteristics:** Colorful, distinctive, innovative, versatile, practical, ecological

**Frame Maintenance:** Clean with soft cloth and warm water. Avoid contact with chlorinated pool water. Areas splashed with chlorinated water should be cleaned with ordinary water. Wash tabletop with warm water in which natural soap flakes have been dissolved or with DEDON's teak cleaner.

**Cushion Maintenance:** All cushion covers can be removed and washed.

**Craftsmanship in numbers: Length:** 1591 m / 1740 yds **Weaving hours:** 49

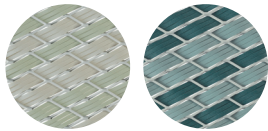
### Colors



164  
rioja

165  
ubud

166  
cuba



167  
ibiza

168  
bahamas

### Additional Items



Cover  
Ref. **AJL**

### Cushions

rioja, ubud, cuba, ibiza, bahamas:

Ref. **AJK**

Please see Fabric Options Fact Sheet

### Deco Cushions

Recommended deco cushions:

70x70 cm 27 1/2"x27 1/2" 2x Ref. **ABD**  
+ fabric code

60x60 cm 23 1/2"x23 1/2" 2x Ref. **ABE**  
+ fabric code

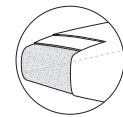
50x50 cm 19 3/4"x19 3/4" 1x Ref. **ABG**  
+ fabric code

40x40 cm 15 3/4"x15 3/4" 1x Ref. **ABK**  
+ fabric code

### Features



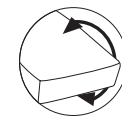
Assembly  
required



Dry+  
cushion



Casters



Turnable



360°



Contract

To learn more about DEDON, our collections and warranty policy, please visit our website –

[dedon.de](http://dedon.de)

12/23

**DEDON**