

THONET



Programm 808

Design Formstelle





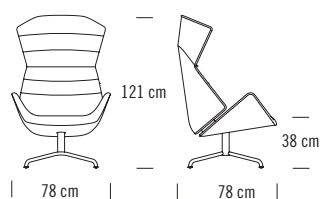
Mit dem Programm 808 hat das Münchner Designstudio Formstelle einen Lounge-Sessel entwickelt, der maximalen Komfort mit zahlreichen Möglichkeiten zur Individualisierung verbindet. Der Lounge-Sessel 808 spielt mit dem Kontrast zwischen schützender Hülle und Offenheit. In seiner Umgebung bietet er einen Ort des Rückzugs und der Ruhe. Seine charakteristische Anmutung entsteht durch eine konsequente Neuinterpretation des klassischen Ohrensessels – das obere Rückenteil erinnert an einen schützenden Kragen. Die Schale umfängt den Sitzenden und vermittelt Geborgenheit. Das zweite markante Merkmal ist die bequeme, an Wellen erinnernde Polsterung. Der innere weiche Kern mit der lockeren Kissenoptik steht im spannungsvollen Gegensatz zur äußeren Schale. Schließlich ermöglicht eine intelligente Verstellmechanik dem Nutzer die individuelle Anpassung des Sessels. Das Programm wird durch einen Fußhocker abgerundet.

Ein von Formstelle eigens für den Lounge-Sessel 808 entwickeltes Materialkonzept ergänzt die detailreiche und durchdachte Gestaltung. In Zusammenarbeit mit der deutschen Stoffmanufaktur Rohi haben die Designer einen individuellen Stoff für den 808 entwickelt: „Soul“ ist in dreizehn Farbtönen verfügbar und zeichnet sich durch den Einsatz hochwertiger Schurwollgarne und durch eine mehrdimensionale wabenartige Struktur aus, die dem Stoff Tiefe verleiht. Kunden können aus sechs unterschiedlichen Farbwelten auswählen, die jeweils aus den Material-Optionen Leder, Stoff und Formfleece und darauf abgestimmten Ziernähten bestehen.

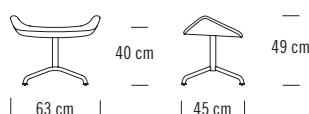
With the new programme range 808, Munich based design studio Formstelle has created a lounge chair that combines maximum comfort with numerous possibilities for individualisation. The new lounge chair 808 plays with the contrast between a protective shell and an inviting openness, creating a place of retreat and calm. Its distinctive appearance is created through a contemporary reinterpretation of the classic wing chair – the shape suggests an elegant cocoon that embraces the person sitting in the chair and communicates a feeling of security. Another striking characteristic is the comfortable upholstery with its welcoming soft wave effect. This inner cushioned core establishes an intriguing contrast with the angularity of the outer shell. A clever mechanism allows users to individually adjust the position of the chair, while a footstool enhances the programme.

An upholstery concept that Formstelle has exclusively developed for the lounge chair 808 completes this highly detailed and well-conceived design. The designers have created a distinct fabric for the lounge chair 808 in collaboration with the German textile manufacture Rohi: „Soul“ is available in thirteen colours and impresses with a high-quality new woollen yarn and a multidimensional honeycomb structure that lends depth to the fabric. Customers can choose from six different colour worlds, each consisting of material options in leather, fabric and formed fleece, with matching decorative seams.

Maße / Measurements



808



808 H



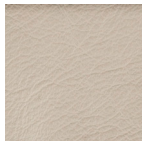
Für Ihr persönliches Modell 808 haben wir sechs Farbwelten entwickelt. Aus diesen können Sie jeweils ein Material für das **Innenpolster** und ein Material für die **Außenfläche** auswählen. Zu den Materialzusammenstellungen gehört der eigens für Thonet gewebte Stoff „Soul“ von Rohi. Neben den Leder- und Stoffkombinationen haben Sie die Möglichkeit auf der Rückseite Formfleece zu verwenden. Bewegen Sie sich dabei sowohl innerhalb als auch zwischen den verschiedenen Farbwelten und wählen Sie zusätzlich aus den unterschiedlichen **Gestellen** Ihren Favoriten aus. So gestalten Sie sich Ihren individuellen Loungesessel.

We have developed six colour worlds for your personalised model 808. You can select one material for each, for the **cushion** and the **shell**. Among the fabrics is the woven material “Soul” by Rohi, which was especially manufactured to match Thonet’s colour worlds. In addition to the leather and fabric combinations you have the possibility to use formable fleece for the back. Move within one or between the different colour worlds and choose your favourite version of our **frames**. Design your individual lounge chair.

Farbwelt „Air“ / Colour world „Air“



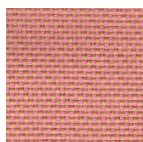
Innenpolster / Cushion



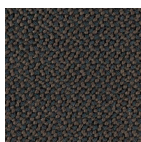
Leder Linea 659
Leather Linea 659



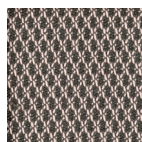
Nubukleder 9
Nubuck Leather 9



Rohi Novum flamingo
Rohi Novum flamingo

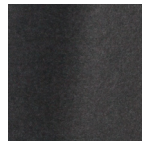


Rohi Credo rosewood
Rohi Credo rosewood

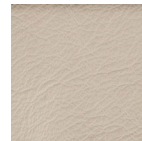


Rohi Soul 158 air
Rohi Soul 158 air

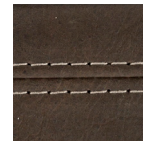
Außenfläche / Shell



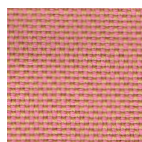
Formfleece
Formable fleece



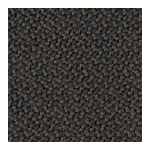
Leder Linea 659
Leather Linea 659



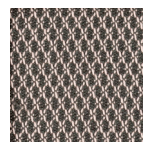
Nubukleder 9
Nubuck Leather 9



Rohi Novum flamingo
Rohi Novum flamingo



Rohi Credo rosewood
Rohi Credo rosewood



Rohi Soul 158 air
Rohi Soul 158 air

Gestell / Frame



Edelstahl
Stainless steel



Holz mit Bugholzteilen: Nussbaum
Wood with bent parts: walnut



Holz mit Bugholzteilen: Eiche
Wood with bent parts: oak



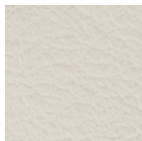
Stahlrohr verchromt oder lackiert (Schokobraun)
Tubular steel chrome-plated or lacquered
(Chocolate brown)



Farbwelt „Grey“ / Colour world „Grey“



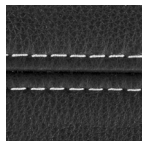
Innenpolster / Cushion



Leder Linea 647
Leather Linea 647



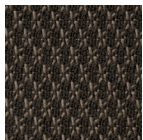
Leder Linea 623
Leather Linea 623



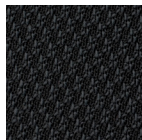
Nappaleder 500
Nappa leather 500



Rohi Soul 160 angora
Rohi Soul 160 angora



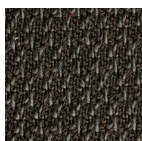
Rohi Soul 153 anthrazit
Rohi Soul 153 anthrazit



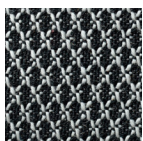
Rohi Soul 1650 black
Rohi Soul 1650 black



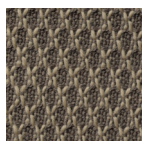
Rohi Soul 167 cocos
Rohi Soul 167 cocos



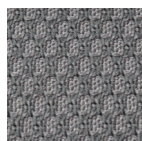
Rohi Soul 152 graphit
Rohi Soul 152 graphit



Rohi Soul 151 pepper
Rohi Soul 151 pepper



Rohi Soul 149 stone
Rohi Soul 149 stone

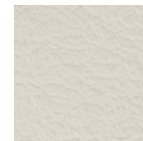


Rohi Soul 155 warmgrey
Rohi Soul 155 warmgrey

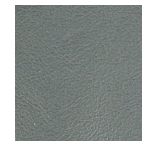
Außenfläche / Shell



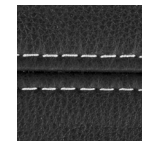
Formfleece
Formable fleece



Leder Linea 647
Leather Linea 647



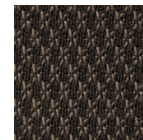
Leder Linea 623
Leather Linea 623



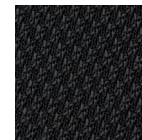
Nappaleder 500
Nappa leather 500



Rohi Soul 160 angora
Rohi Soul 160 angora



Rohi Soul 153 anthrazit
Rohi Soul 153 anthrazit



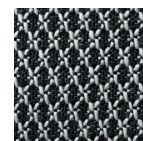
Rohi Soul 1650 black
Rohi Soul 1650 black



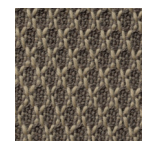
Rohi Soul 167 cocos
Rohi Soul 167 cocos



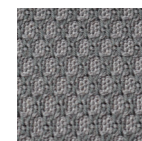
Rohi Soul 152 graphit
Rohi Soul 152 graphit



Rohi Soul 151 pepper
Rohi Soul 151 pepper



Rohi Soul 149 stone
Rohi Soul 149 stone



Rohi Soul 155 warmgrey
Rohi Soul 155 warmgrey

Gestell / Frame



Edelstahl
Stainless steel



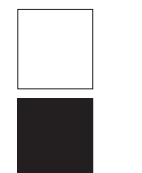
Holz mit Bugholzteilen: Nussbaum
Wood with bent parts: walnut



Holz mit Bugholzteilen: Eiche
Wood with bent parts: oak



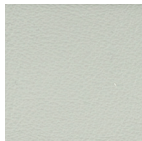
Stahlrohr verchromt oder lackiert (Weiß, Schwarz)
Tubular steel chrome-plated or lacquered (White, Black)



Farbwelt „Island“ / Colour world „Island“



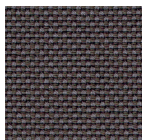
Innenpolster / Cushion



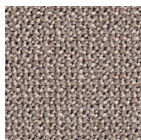
Leder Linea 630
Leather Linea 630



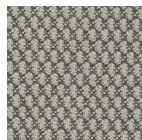
Nappaleder 2001
Nappa leather 2001



Rohi Novum plaza
Rohi Novum plaza

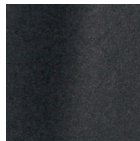


Rohi Credo stone
Rohi Credo stone

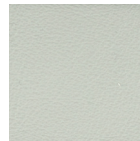


Rohi Soul 154 island
Rohi Soul 154 island

Außenfläche / Shell



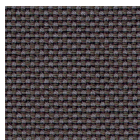
Formfleece
Formable fleece



Leder Linea 630
Leather Linea 630



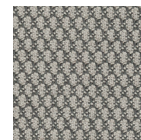
Nappaleder 2001
Nappa leather 2001



Rohi Novum plaza
Rohi Novum plaza



Rohi Credo stone
Rohi Credo stone



Rohi Soul 154 island
Rohi Soul 154 island

Gestell / Frame



Edelstahl
Stainless steel



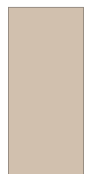
Holz mit Bugholzteilen: Nussbaum
Wood with bent parts: walnut



Holz mit Bugholzteilen: Eiche
Wood with bent parts: oak



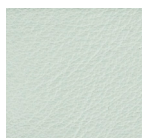
Stahlrohr verchromt oder lackiert (Warmgrau)
Tubular steel chrome-plated or lacquered (Warm grey)



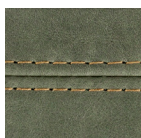
Farbwelt „Under“ / Colour world „Under“



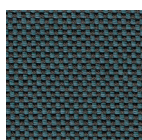
Innenpolster / Cushion



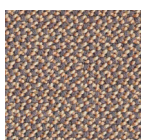
Leder Linea 641
Leather Linea 641



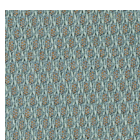
Nubukleder 8
Nubuck leather 8



Rohi Novum delphi
Rohi Novum delphi

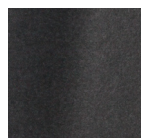


Rohi Credo paradise
Rohi Credo paradise

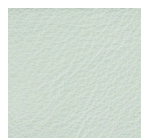


Rohi Soul 156 under
Rohi Soul 156 under

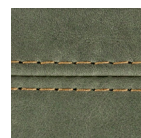
Außenfläche / Shell



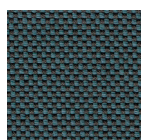
Formfleece
Formable fleece



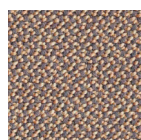
Leder Linea 641
Leather Linea 641



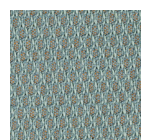
Nubukleder 8
Nubuck leather 8



Rohi Novum delphi
Rohi Novum delphi



Rohi Credo paradise
Rohi Credo paradise



Rohi Soul 156 under
Rohi Soul 156 under

Gestell / Frame



Edelstahl
Stainless steel



Holz mit Bugholzteilen: Nussbaum
Wood with bent parts: walnut



Holz mit Bugholzteilen: Eiche
Wood with bent parts: oak



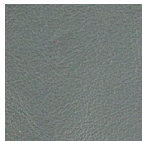
Stahlrohr verchromt oder lackiert (Grüngrau)
Tubular steel chrome-plated or lacquered (Green grey)



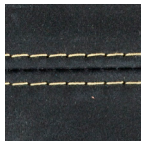
Farbwelt „Urban“ / Colour world „Urban“



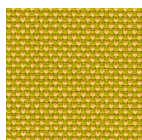
Innenpolster / Cushion



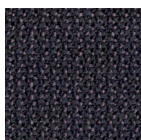
Leder Linea 623
Leather Linea 623



Nubukleder 10
Nubuck leather 10



Rohi Novum pear
Rohi Novum pear

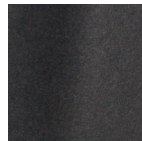


Rohi Credo anthrazit
Rohi Credo anthrazit

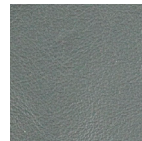


Rohi Soul 157 urban
Rohi Soul 157 urban

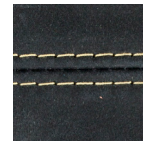
Außenfläche / Shell



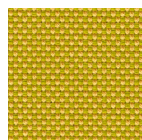
Formfleece
Formable fleece



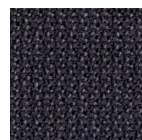
Leder Linea 623
Leather Linea 623



Nubukleder 10
Nubuck leather 10



Rohi Novum pear
Rohi Novum pear



Rohi Credo anthrazit
Rohi Credo anthrazit



Rohi Soul 157 urban
Rohi Soul 157 urban

Gestell / Frame



Edelstahl
Stainless steel



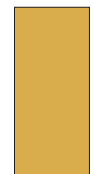
Holz mit Bugholzteilen: Nussbaum
Wood with bent parts: walnut



Holz mit Bugholzteilen: Eiche
Wood with bent parts: oak



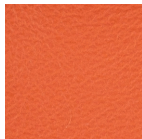
Stahlrohr verchromt oder lackiert (Senf gelb)
Tubular steel chrome-plated or lacquered (Mustard yellow)



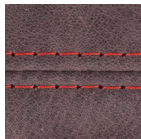
Farbwelt „Tropic“ / Colour world „Tropic“



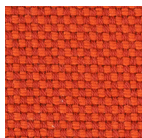
Innenpolster / Cushion



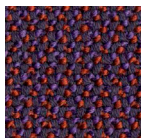
Leder Linea 617
Leather Linea 617



Nubukleder 2
Nubuck leather 2



Rohi Novum sunset
Rohi Novum sunset

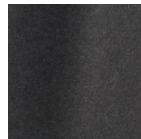


Rohi Credo cassis
Rohi Credo cassis

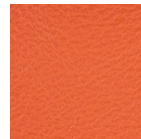


Rohi Soul 159 tropic
Rohi Soul 159 tropic

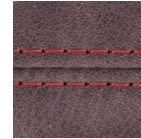
Außenfläche / Shell



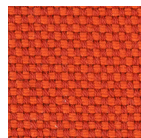
Formfleece
Formable fleece



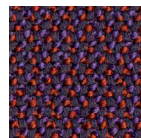
Leder Linea 617
Leather Linea 617



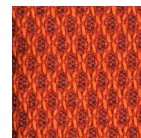
Nubukleder 2
Nubuck leather 2



Rohi Novum sunset
Rohi Novum sunset



Rohi Credo cassis
Rohi Credo cassis



Rohi Soul 159 tropic
Rohi Soul 159 tropic

Gestell / Frame



Edelstahl
Stainless steel



Holz mit Bugholzteilen: Nussbaum
Wood with bent parts: walnut



Holz mit Bugholzteilen: Eiche
Wood with bent parts: oak



Stahlrohr verchromt oder lackiert (Tomatenrot)
Tubular steel chrome-plated or lacquered (Tomato red)

